

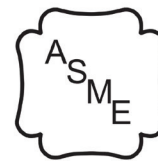


Eco-King

CANADIAN CRAFTSMANSHIP  
EUROPEAN ENGINEERING

## THE ULTIMATE RESIDENTIAL BOILER SERIES

- **H Model (Heating):** The robust choice for total home comfort. Provides powerful space heating and domestic hot water when paired with an indirect tank.
- **C Model (Combi):** The supreme All-in-One solution. Delivers efficient space heating paired with instant, on-demand domestic hot water.
- **High-Efficiency Performance:** European-engineered technology up to 95% AFUE efficiency; A fully modulating, condensing boiler with 6:1 Turn Down Ratio and DHW priority.
- **Simplified Piping:** A built-in 3-way valve separates domestic hot water from heating, while the dual-function pump saves time and money during installation.
- **Versatile Venting:** Approved for PVC, CPVC, and PP with support for long vent lengths.
- **Robust Core:** Equipped with a durable and thermal shock-proof heat exchanger.
- **Integrated Hydraulics:** Includes a Variable Speed Grundfos Pump and a 6L Expansion Tank built right in.
- Now featuring **individual, easy-access temperature and flow sensors, standard NPT connections**, and a new dedicated return line
- **Peace of Mind:** Peace of Mind: Backed by a 2-Year Warranty on Parts and a 12-Year Warranty on the Primary Heat Exchanger (Terms and Conditions Apply).



H

Efficient. Powerful. Proudly Made in  
Canada.

**Head Office**

#103 - 2567 192 St.  
Surrey, BC, V3S3X1

604.385.3265  
sales@ecokingheating.com



[ecokingheating.com](http://ecokingheating.com)





# Eco-King

CANADIAN CRAFTSMANSHIP  
EUROPEAN ENGINEERING

### Head Office

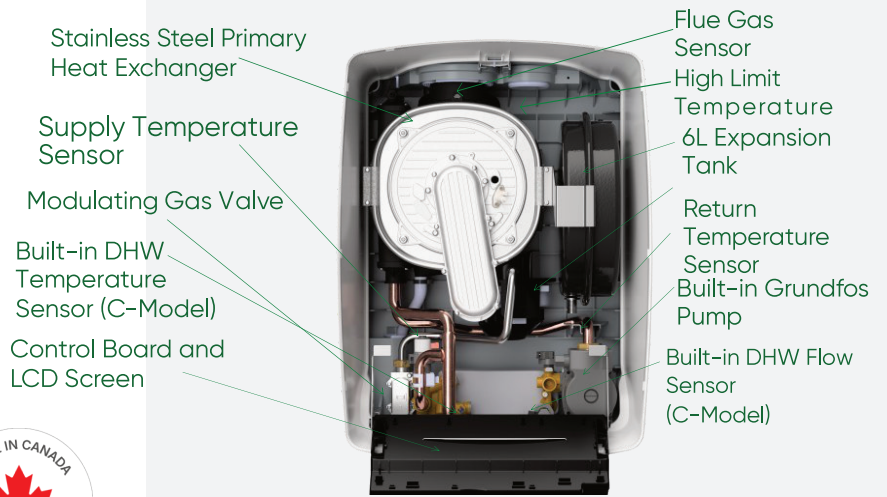
#103 - 2567 192 St.  
Surrey, BC, V3S3X1

604.385.3265

sales@ecokingheating.com



ecokingheating.com



**Dimensions (HxWxD)**  
**27" x 19" X 16"**  
 99H/99C | 140H/140C | 200H/200C

**Weight**  
**68 | 75 | 82 lbs**  
 99H/99C | 140H/140C | 200H/200C

**Modulation**  
**6:1 Fully Modulating**

**Water connection**  
**3/4" MNPT**

**Maximum Heat Supply**  
**185°F/85°C**

**Maximum DHW Temp**  
**158°F / 70°C**

BTU/hr	
Model	BTU/hr
99H/99C	16,000 - 99,000
140H/140C	19,800 - 135,000
200H/200C	26,900 - 185,000

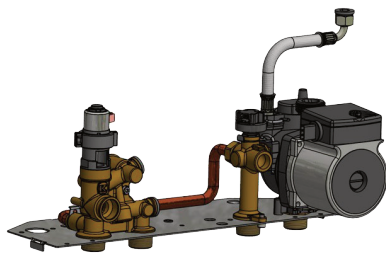
**Intake/Exhaust**  
 3" PP (80mm)  
 2" Possible with included adapters

**Gas Connection**  
**1/2" MNTP**

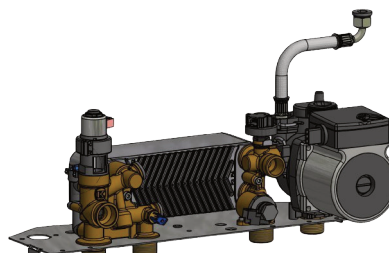
**Efficiency AFUE**  
**95%**

DHW Combi 54°F Rise	
Model	
99H/99C	3.4 GPM
140H/140C	4.2 GPM
200H/200C	6.6 GPM

DHW Combi 96°F Rise	
Model	
99H/99C	2.1 GPM
140H/140C	2.6 GPM
200H/200C	4 GPM



HYDROBLOCK FOR H-MODEL



HYDROBLOCK FOR C-MODEL