



Eco-King Supreme Condensing Boiler and Combi Boiler New and Improved Version



Available in Combi (C) and Heating (H) Model

H Model Boiler Provides Space Heating and Hot Water When Combined with an Indirect Tank

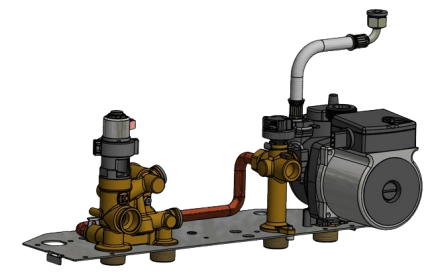
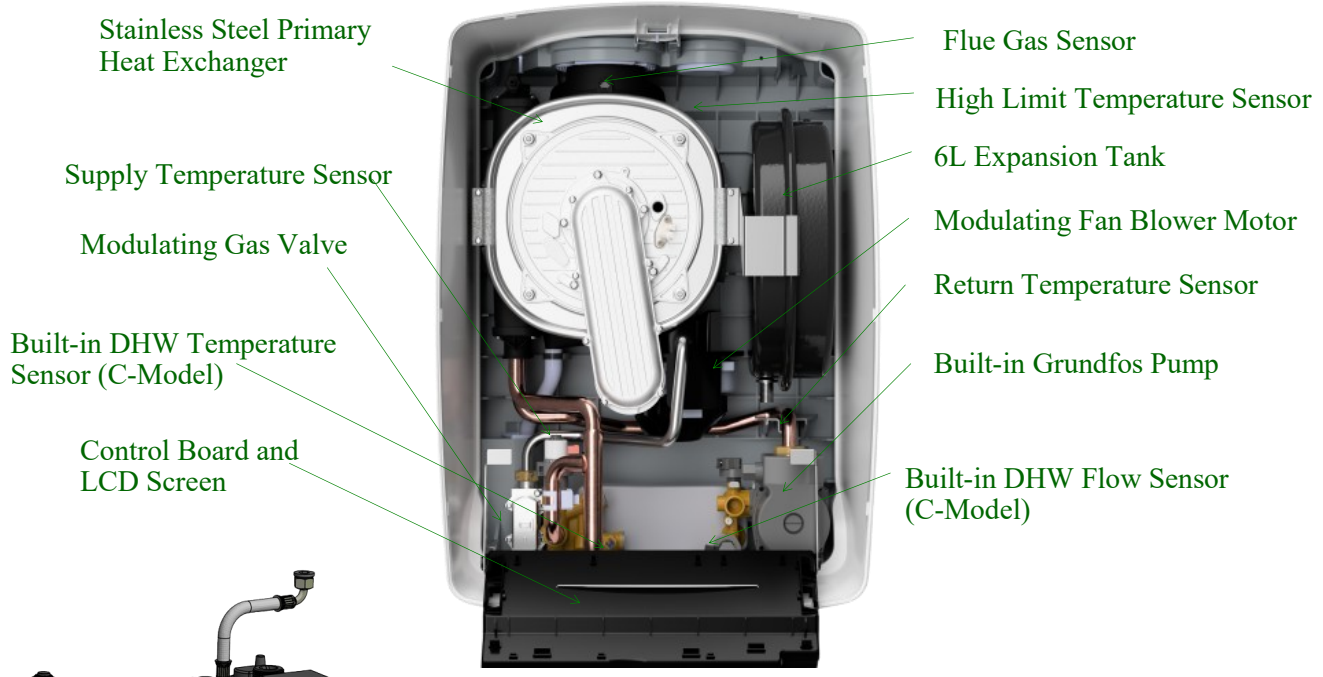
C Model Provides Space Heating with On-Demand Hot Water. All-in-One Unit

- European engineered high efficient up to 95% wall hung boilers and now Proudly Made in Canada
- Built in 3-way valve separates domestic hot water from heating equals simplified piping and easy install
- 3 Boiler Sizes 99,000 / 140,000 / 200,000 BTU/Hr
- NEW IN 2024: NPT Connections, dedicated indirect return connection on H Models and easier access to all parts that continues our tradition of being industry best boiler for simple installation and servicing

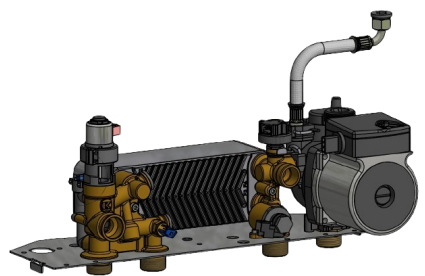
Included in All Boilers:

Pressure Relief Valve 45psi / Outdoor Sensor / Venting Adapter 3" x 2" / Condensate P-Trap
Variable Speed Grundfos™ pump and 6L expansion tank!





HYDROBLOCK FOR H-MODEL



HYDROBLOCK FOR C-MODEL

MAIN FEATURES:

- ✓ User friendly colored touch button LCD screen
- ✓ Durable and thermal shock proof heat exchanger
- ✓ PVC/CPVC/PP approved-venting w/long vent lengths
- ✓ Built-in pressure sensor and manual reset high limit
- ✓ DHW priority and runs off natural gas or propane
- ✓ Extremely quiet operation, compact and lightweight
- ✓ Fully modulating, condensing boiler with 6:1 Turn Down Ratio
- ✓ 2 Year warranty on parts & 12 year warranty on primary heat exchanger *Terms and Conditions Apply*
- ✓ Now individual easy to access temperature and flow sensors
- ✓ NEW dedicated return line for indirect tanks on H models
- ✓ Built in 3-way valve separates domestic hot water from heating equals simplified piping and easy install
- ✓ Dual function pump that saves time and money during installation

TECHNICAL INFORAMTION:

Model	BTU/hr	Modulation	Max DHW Temp	Max Heating Supply	DHW Combi 54F Rise	DHW Combi 90F Rise
99H/99C	16,000-99,000	6:1 Fully Modulating	158°F/70°C	185°F/85°C	3.4 GPM	2.1 GPM
140H/140C	19,800-135,000				4.2 GPM	2.6GPM
200H/200C	26,900-185,000				6.6 GPM	4 GPM
Model	Dimensions (H x W x D)	Weight (LBS)	Water Connections (NPT)	Intake/Exhaust Connection	Gas Connection	Efficiency AFUE
99H/99C	27" x 19" x 16"	68	3/4"	3" PP (80mm) 2" possible with included adapters	1/2" MNPT	94.1%
140H/140C		75				
200H/200C		82				

