

**ECO-KING**

**King Heating Products Inc.**

**WWW.ECO-KING.COM**

## **ECO-KING SUPREME**

**HIGH EFFICIENT WALL HUNG BOILERS**



**H MODEL** boiler provides heating and hot water when combined with an Indirect tank  
**COMBI (C)** provides heating with on-demand hot water. All-in-one unit

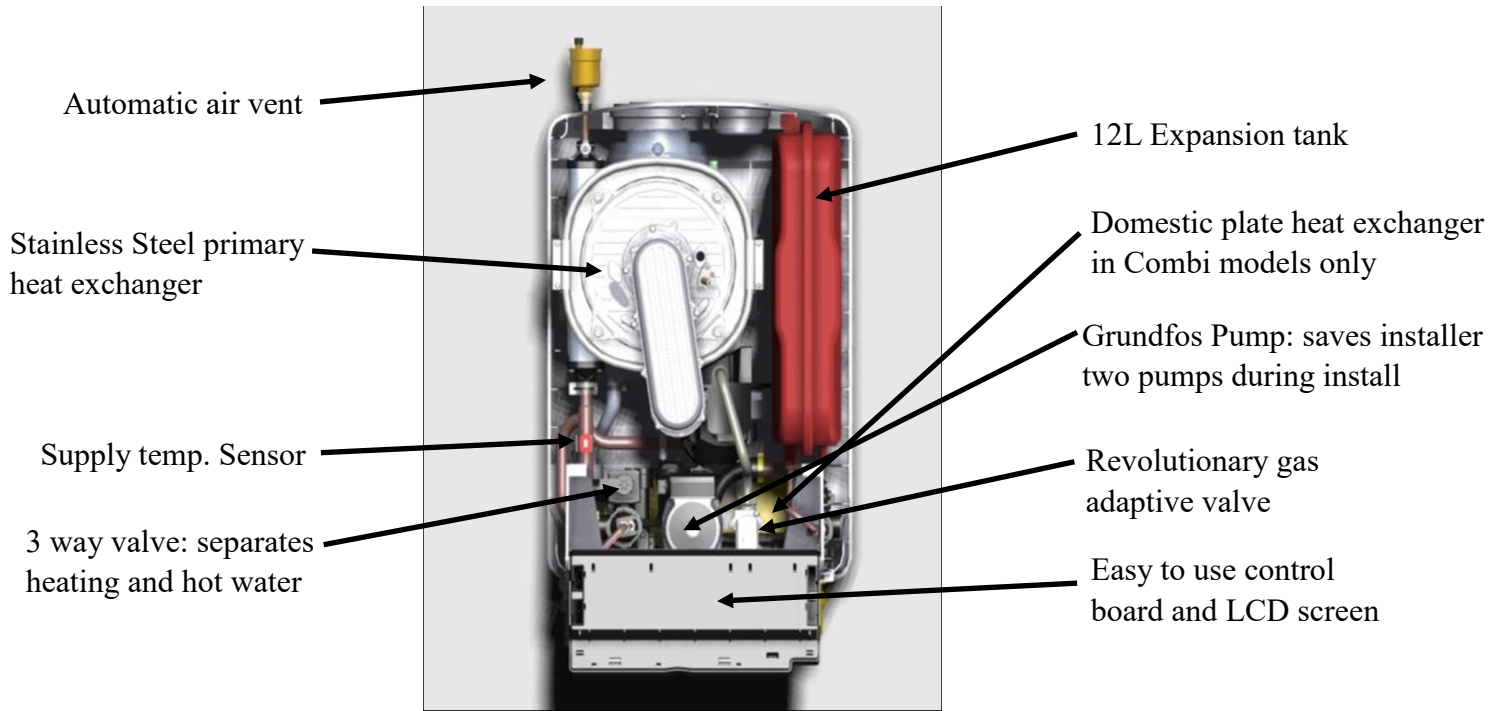
- Up to 95% high efficient wall hung boilers now **MADE IN CANADA**
- Extremely quiet operation, compact & lightweight
- Fully modulating, condensing 6-1 turn down ratio and durable Stainless Steel heat exchanger
- 3 boiler sizes, 100, 140 & 200,000 BTU. All with advanced European "Adaptive Gas Valve"
- 2 year warranty on parts & 12 year warranty on heat exchanger \*when registered\*
- Stylish black cover dampens boiler noise significantly
- Built in diverter valve separates domestic hot water from heating. Separate heating and hot water connections means simple piping for installer
- Multiple venting options, automatic air vent & outdoor sensor included with all boilers
- Universal parts and simple access to inside boilers allows for easy servicing

### **INCLUDED IN ALL BOILERS:**

Variable Speed Grundfos™ pump and 12L expansion tank!



## Boiler Layout: Universal parts included in all boilers



General		Eco King C100, H100	Eco King C140, H140	Eco King C200, H200
Dimensions (h x w x d)	inch	27 x 19 x 16	27 x 19 x 16	27 x 19 x 16
Weight (empty)	lbs	68	75	82
All water connections on boiler	inch	3 / 4" CPS (7 / 8" od)	3 / 4" CPS (7 / 8" od)	3 / 4" CPS (7 / 8" od)
Gas Connection	inch	1 / 2" NPT outer pipe thread	1 / 2" NPT outer pipe thread	1 / 2" NPT outer pipe thread
Concentric flue gas connection	mm / inch	80/125mm 3" / 5"	80 / 125mm 3" / 5"	80 / 125mm 3" / 5"
Single Pipe flue gas connection	mm/inch	80mm 3" (max 80ft per side)	80mm 3" (max 80ft per side)	80mm 3" (max 80ft per side)
(2" venting needs reducer)	mm/inch	60mm 2" (max 45ft per side)	60mm 2" (max 45ft per side)	60mm 2" (max 45ft per side)

Domestic Hot Water (H & C model units)*		H100 / C100	H140 / C140	H200 / C200
Nominal Input in DHW Mode	Btu / hr	16,000 - 105,000	19,800 - 137,000	26,900 - 185,000
Max Output in DHW mode	Btu / hr	95,000	122,000	167,000
Tap water with $\Delta T = 90^{\circ}\text{F}$ in C Models	usg / minute	2.1	2.6	4
Tap water with $\Delta T = 54^{\circ}\text{F}$ in C Models	usg / minute	3.4	4.2	6.6
Central Heating Operation		H100 / C100	H140 / C140	H200 / C200
Nominal input (0-2000ft) in CH mode	Btu/hr	16 - 90,800	19,800 - 113,600	26,900 - 159,000
Max. Output (0-2000ft) in CH mode	Btu/hr	85,000	106,500	150,000

\* MAX DHW Input levels listed occur in both C (combi) & H model boilers when producing hot water. H-model connected to an external hot water tank

Eco-King Combi boilers continuous hot water output for cold weather climates\*\*:

\*\*hot water production will increase or decrease depending on climate and incoming water temperature and all figures below are approximations

