



March 07, 2024

Revised Eco-King Supreme boiler new in 2024.

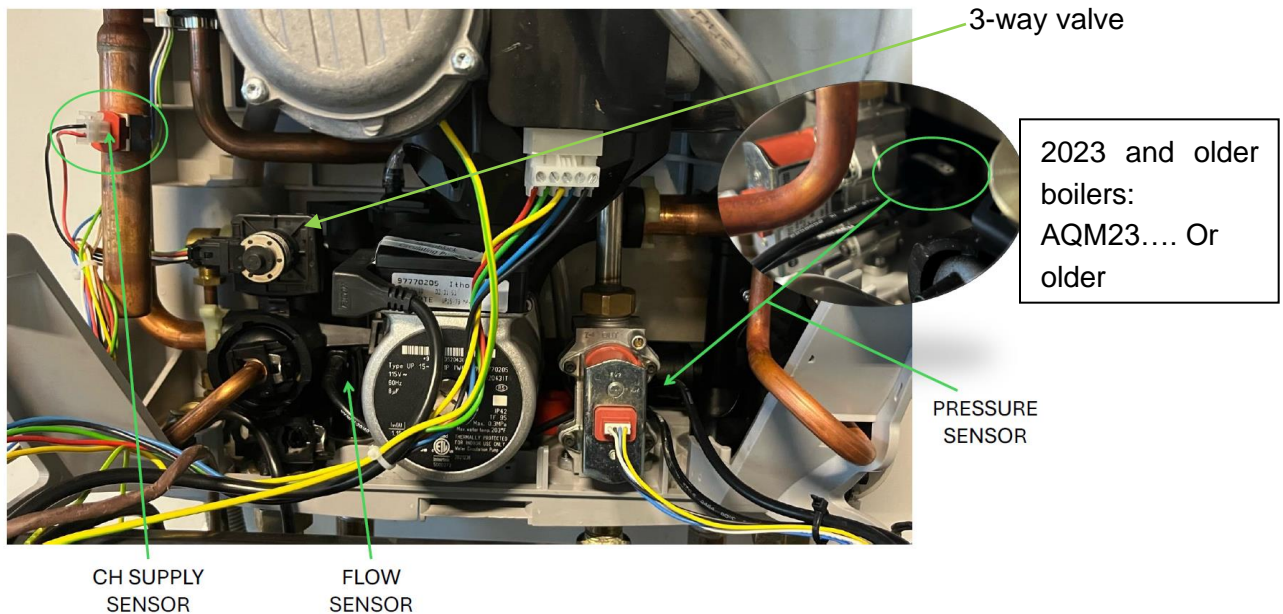
Eco-King is proud to present our revised Eco-King Supreme line of boilers new for 2024. We wanted to keep our tradition of having an extremely easy to service boiler and in fact we feel the slight changes done make our boilers even more serviceable. Essentially all functionality of our control board and LCD screen have not changed. What you knew in the past for settings and controls, is still the same.

Here we have listed the changes we've made, and added some pictures to show the different location of sensors and

- 1) After lots of requests for this, all heating and domestic connections are ¾" MNPT.
- 2) The revised Eco-King boiler now has four sensors for temperature, flow, and pressure.
 - a. dedicated domestic supply temperature sensor.
 - b. dedicated domestic flow sensor.
 - c. dedicated pressure sensor
 - d. Dedicated heating return temperature sensor

These sensors will be easier to access then old ones and easier to diagnose issues as a result. Below is a picture of old and new versions. It shows the different location of sensors between the versions of boilers. Three-way valve is a new version, but same functionality. Of note, connections to the control board are the same. This means X10 connection is for DHW temp and flow. X11 connection is for Pressure and CH Return Temp.

2023 ACTUAL HYDROBLOCK SENSOR

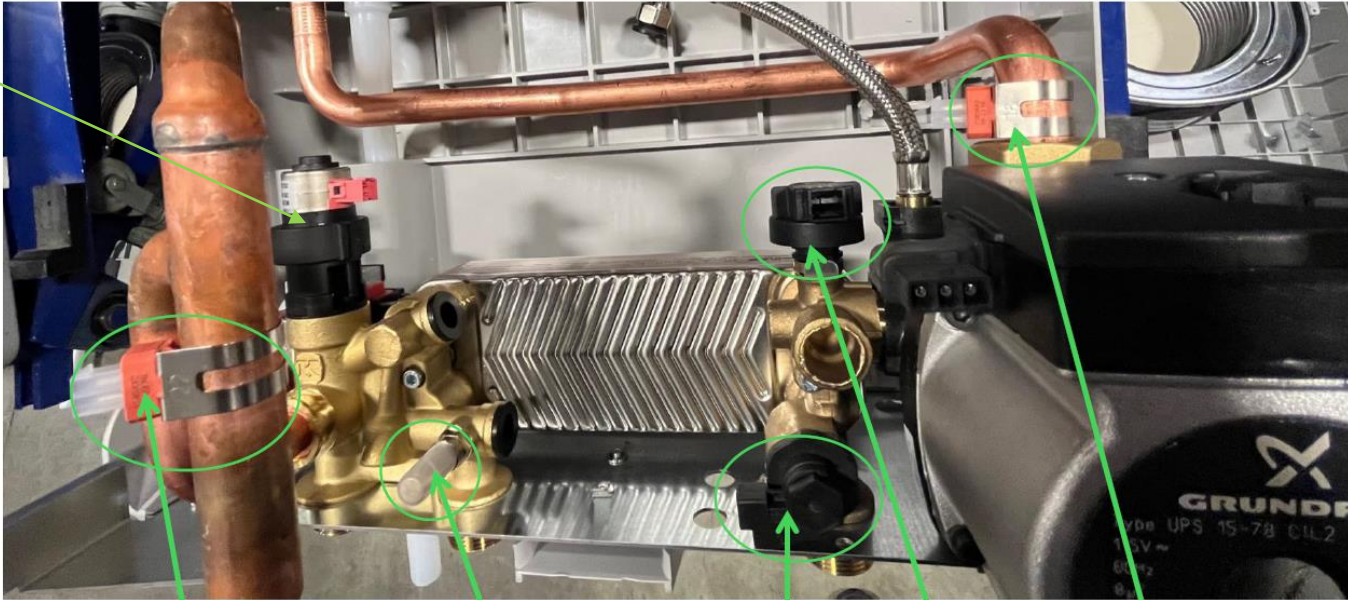




2024 ACTUAL HYDROBLOCK SENSOR

3-way valve

2024 version
AQM24....
Serial
numbers



CH SUPPLY
SENSOR

DHW TEMP
SENSOR

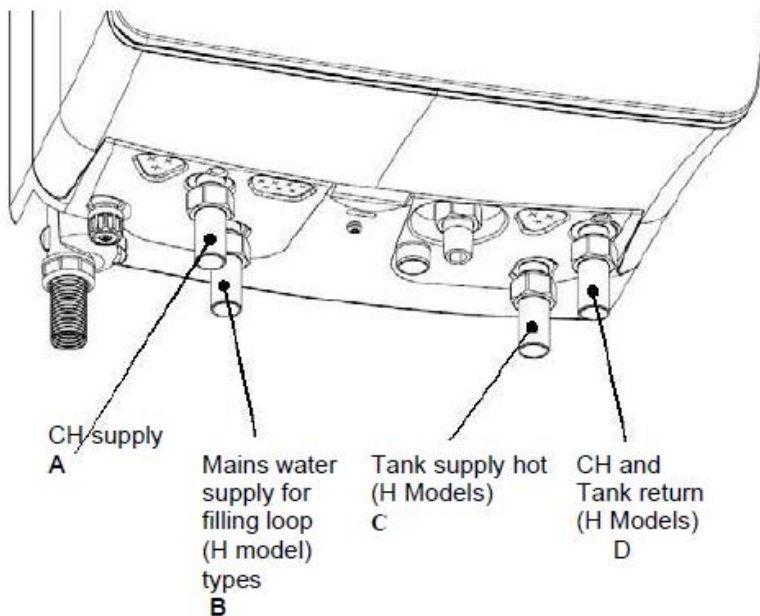
FLOW
SENSOR

PRESSURE
SENSOR

CH RETURN
TEMP SENSOR

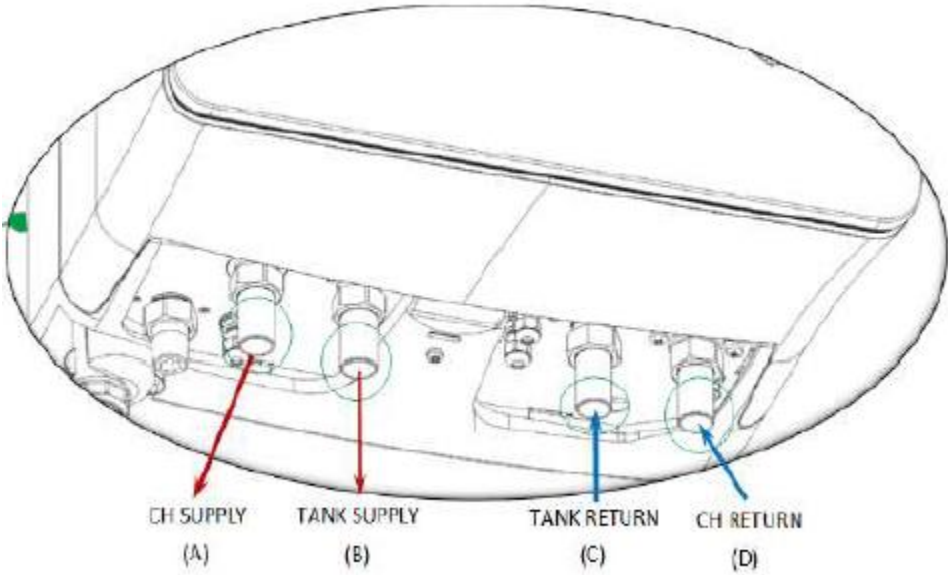
- 3) Our revised Eco-King boiler now has dedicated indirect return line on H model boilers. Previously an indirect tank return pipe shared return to the boiler with heating return. Now we have a dedicated supply to indirect and dedicated return from indirect. See pictures showing the old and new version. We think this makes it easier for installers to pipe and install our H model boilers.

Old version with 1 heating, 1 indirect and 1 combined return connection for H model:





New boiler version with 2 heating and 2 indirect tank connections for H model:



*COMBI (C MODELS) has no changes to piping connections

- 4) With change to four new sensors and to keep same functionality on our control board, we do have an intermediary device on C models. This device works to adjust domestic flow and temperature to a voltage(0-4.5V) that our control board reads to start and modulate the boiler when producing DHW. This intermediary device is located inside the control board housing and is shown in the picture below:





- 5) We include two vent adapters to reduce from 3" to 2" venting. We still recommend 3" venting, but in cases where 2" is needed, the vent adapters leave you with one less thing to source.

This document is created to introduce you to the physical changes and give an explanation as to where the changes occur inside the boiler and why they were taken.

We appreciated your continued support and are excited for you to install and use our Eco-King boilers!

More information for training and such can be requested via King Heating's office or by email at sales@ecokingheating.com

Sincerely,

Chad Euverman
President
King Heating Products Inc